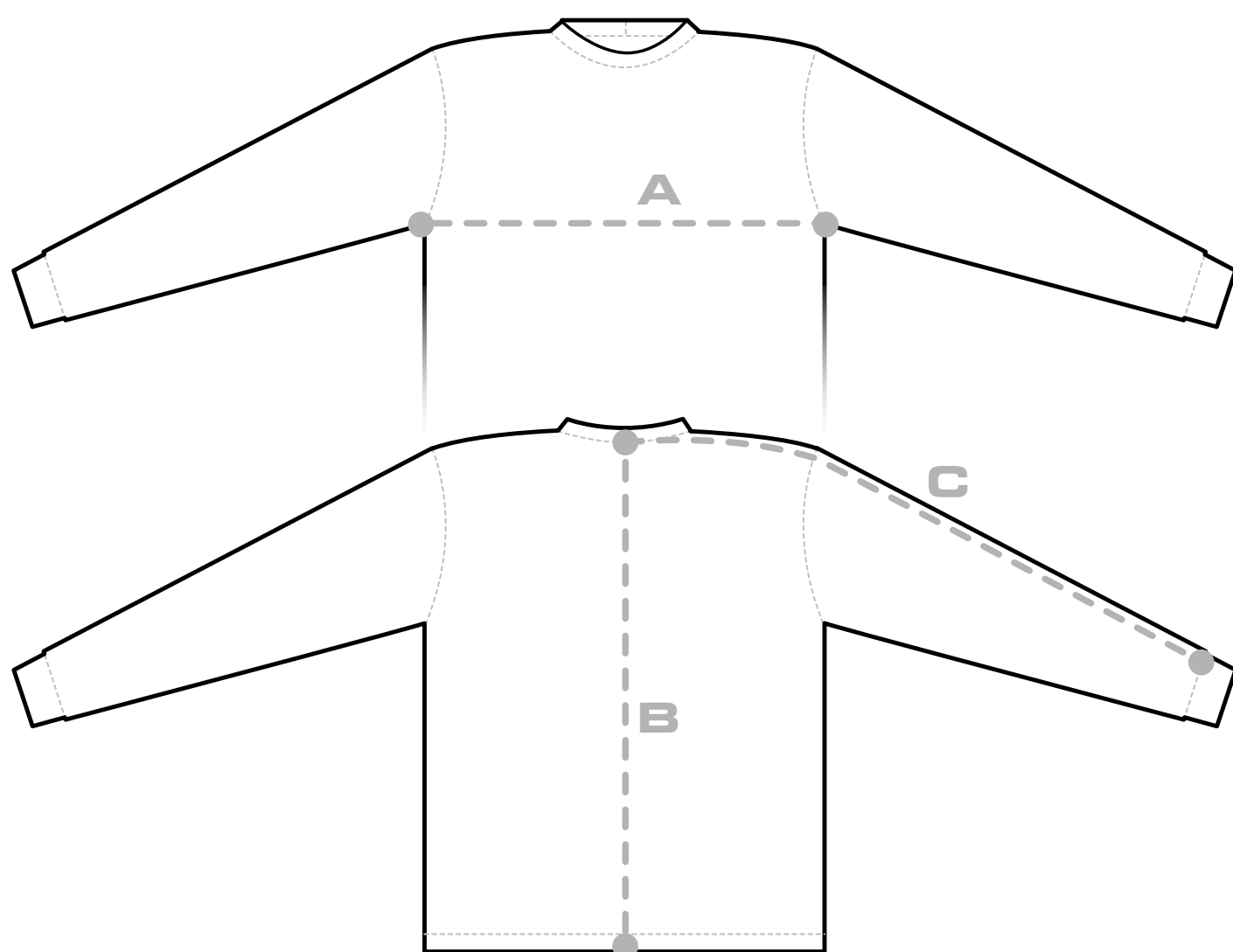


SIZE	CHEST WIDTH	BACK LENGTH	SLEEVE LENGTH
XS	21"	28"	33"
S	22"	29"	34"
M	23"	30"	35"
L	24"	31"	36"
XL	25"	32"	37"
2XL	26"	32"	38"
3XL	27"	33"	39"
4XL	29"	33"	39"
5XL	31"	33"	39.5"
6XL	32"	34"	39.5"

MEASURE YOURSELF FOR THE BEST FIT

Get The Right Fit - For Comfort & Style!



A. CHEST WIDTH:

Measure from armpit to armpit across the chest.

B. BACK LENGTH:

Measure from centre of back at neck to bottom of shirt.

C. SLEEVE LENGTH:

Measure from centre of back at neck, down across shoulder to elbow and down to wrist.

TIP:

One of the easiest ways to go about finding a good fit is to find a shirt in your closet that fits you well and lay it out on a table. Take the measurements of that shirt as shown here. Then choose the closest fit from one of our sizing charts.